

North
Family
HUBs



North Family Hubs

January/February Timetable 2025

WC 6th January - 14th February

Other community venues we deliver at:

Bullcroft Memorial Hall

Chestnut Avenue Carcroft
DN6 8AP

Highfields Primary School

Coppice Road, Highfields, DN6 7JB

Scawthorpe Community Centre

Amersall Road, Scawthorpe
DN5 9PQ

Scawsby Community Centre

Barnsley Road, Scawsby, DN5 8QQ

Sprotbrough Community Library

Sprotbrough Road, Sprotbrough
DN5 8BA

Sprotbrough Edmunds Scout Group Hall

Car Park,
Anchorage Lane,
Doncaster
DN5 8DT

We can't wait
to see you!

Discover the sessions, activities, support and events taking place this Autumn for families of children aged 0-5 and beyond!

Join us at:

Adwick Family Hub

Askern Family Hub

Bentley Family Hub



Proudly supporting families in North Doncaster including:
Bentley • Askern • Adwick • Woodlands • Highfields
Roman Ridge • Norton • Carcroft • Sprotbrough • Toll Bar

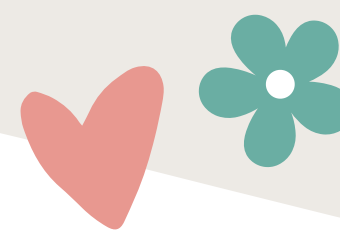
www.yourlifedoncaster.co.uk/family-hubs

January-February Timetable

North
Family
HUBs

	Mondays	Tuesdays	Wednesdays	Thursdays	Fridays
Adwick	Stay & Play 9:30am - 11:00am 	First Friends 1:00pm - 2:30pm	Busy Babies 9:30am-11:00am	Messy Fun for everyone 9:30am-10:30am	Wriggle, Rhyme & Storytime 9:30am - 10:30am
Askern	Wriggle, Rhyme & Story Time 1:30pm - 2.30pm	Messy Fun for everyone 9:30am-10:30am 	Tuneful Chatter 10:00 am-11:00am	Childminders Drop in 9:00am-11:00am First Friends 1:00pm - 2:30pm 	Stay & Play 9:30am - 11:00am
Bentley	Messy Fun for everyone 9:30am-10:30am Busy Babies 1:30pm - 3:00pm	Infant Massage 9:30am - 11:00am <i>(Invite Only)</i> LIGHT Group 10:30am - 12:30pm <i>(Invite Only)</i> Breast Start 1:00pm - 2:30pm	Stay & Play 9:30am - 11:00am 	 <p>All of our sessions are Dad/male carer friendly</p>	First Friends 1:00pm - 2:30pm Wriggle, Rhyme & Story Time 1:30pm-2:30pm
Other venues	Breast Start 9:30am - 11:00am St Edmunds Scout Group Hall, Car Park, Anchorage Lane, Doncaster DN5 8DT First Friends 1:00pm - 2:30pm Bullcroft Memorial Hall, Chestnut Avenue, Carcroft, DN6 8AP 	Stay & Play 9:00am - 10:30am Highfields Primary School, Market Street, Highfield, DN6 7JB Wriggle, Rhyme & Storytime 1:30pm - 2:30pm Bullcroft Memorial Hall, Chestnut Avenue, Carcroft, DN6 8AP	Breast feeding support & guidance available from qualified Family Hub Staff in all of our hubs. Monday - Friday Pop in or give us a call. 	Wriggle, Rhyme & Storytime 9:15am - 10:15am Sprotbrough Library Sprotbrough Rd, DN5 8BA Wriggle, Rhyme & Storytime 1:30pm - 2:30pm Scawsby Community Centre, Barnsley Rd, Scawsby, DN5 8QQ	 <p>Sensory Room Available to book for free at Askern & Bentley Monday - Friday Please call 01302 737350</p>

Sessions & Activities



North
Family
HUBs

★ First Friends (Birth to Crawling)

Come and play together within a safe informative and stimulating environment, which is welcoming and supportive to all. Health and development advice is available from a Nursery Nurse.

★ Busy Babies (Crawling to Walking)

Join us for our Busy Babies session, where you and your mobile baby can explore our environment. It includes sensory and messy play, music and instruments, physical toys and games, books, stories and singing and soft play. This is a good follow on session from Baby Fun and First Friends.

★ Wriggle, Rhyme & Storytime (0-5)

Enjoy our fun and interactive session where children can explore music, rhymes and stories with their parent/carer using props and sensory resources.



★ Messy Fun for everyone (0-5)

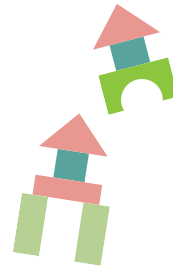
Take part in a variety of messy play experiences. The session aims to provide you and your child with lots of opportunities to explore messy play, experience positive interactions and provide fun low cost play ideas at home. Please dress appropriately as this session WILL get MESSY!!

★ Stay & Play (0-5)

Our Stay and Play session offers a fun session for you and your child to play and learn new skills with a range of fun filled activities, that includes sensory, outdoor, messy play, music and instruments, physical toys and games, book & stories, singing and snack time.

★ Childminder Drop - in (All Welcome)

Run by Ofsted Registered Childminders for the children they care for to play in a stimulating, safe and fun environment. This group also provides the opportunity for networking between Childminders.



Sessions & Activities

★ Infant Massage (from 6 weeks)

You will be invited to book onto these sessions by your Health Visitor – You will learn gentle massage techniques with your baby, which will support bonding and attachment, improve baby's skin and sleep, aid digestion and help reduce colic. Call the Health team for more information on 0300 021 8997.

★ Breast Start

A friendly and relaxed environment that gives an opportunity to meet other mums, share experiences and build your confidence to breast feed, with support from peer supporters and a Trained Health Professional.

★ LIGHT Support Group

Light is a pre- and post-natal peer support group providing support around emotional wellbeing and mental health of mums and their families. This group is bookable in advance by calling 01144 388962.

★ Other Services and Support

You can also access information and support around volunteering, counselling services, how to join our parent groups or become a parent champion, access wider feeding support and much more. For more information about each of these, visit www.doncaster.gov.uk/familyhubs

Don't forget to follow us on Facebook for all the latest updates!

Just search for your local Family Hub on Facebook and make sure to follow us!



Our venues

Adwick Family Hub

Central Avenue,
Woodlands, DN6 7RU
01302 737717

Askern Family Hub

Spa Pool Road, Askern
DN6 0HZ
01302 737099

Bentley Family Hub

The Avenue, Bentley
DN5 0NP
01302 737350

Become a member at your local Family Hub!

For more information, visit:
WWW.YOURLIFEDONCASTER.CO.UK/FAMILY-HUBS

